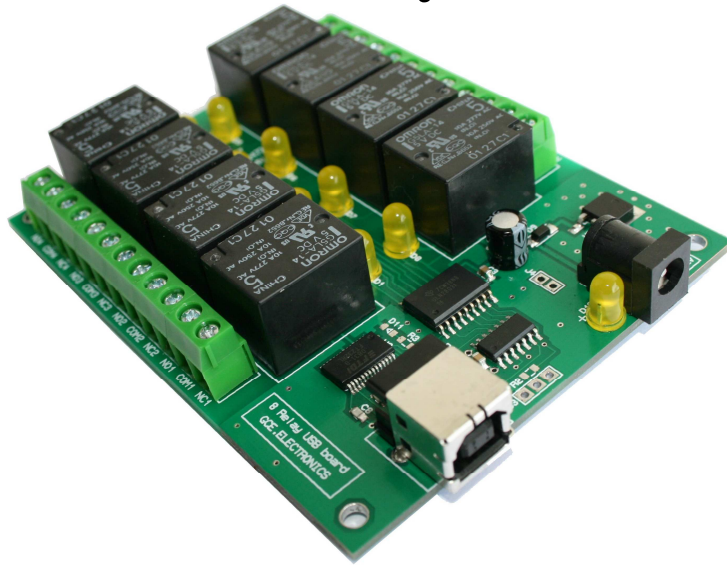


USB 8 Relay Board



Step1: Plug the power jack to the board (7 to 12v DC)

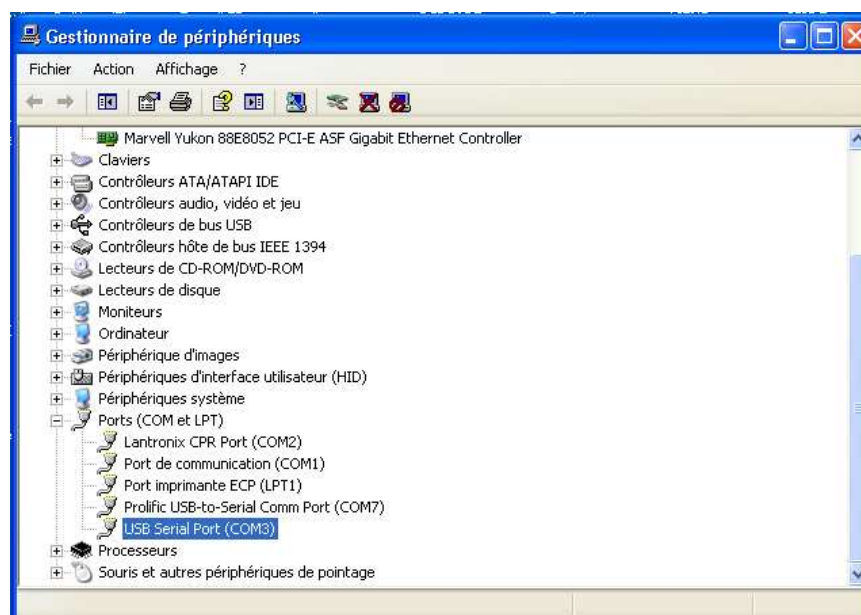
Step2: Plug the usb from your PC to the board

Step3 : Download and Install the FTDI VCP driver :

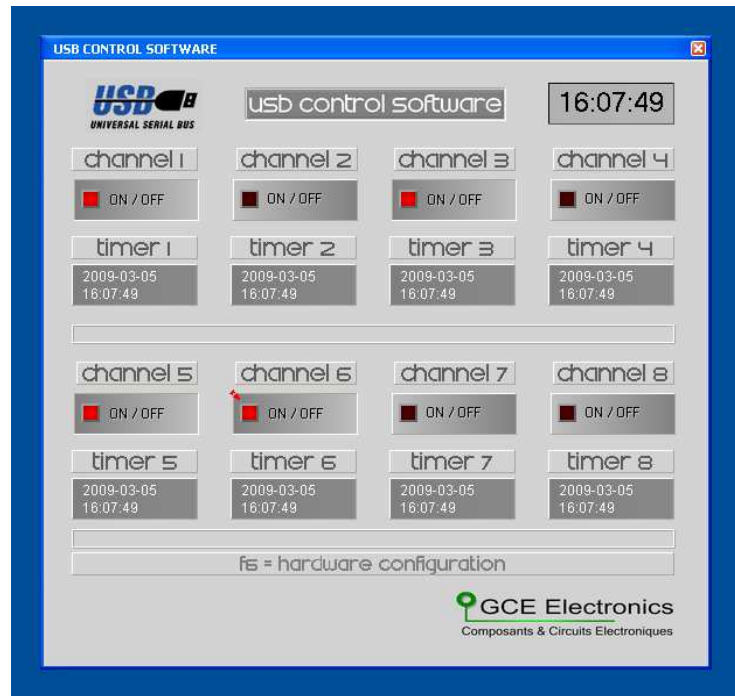
<http://www.ftdichip.com/Drivers/VCP.htm>

<http://www.ftdichip.com/Documents/InstallGuides.htm>

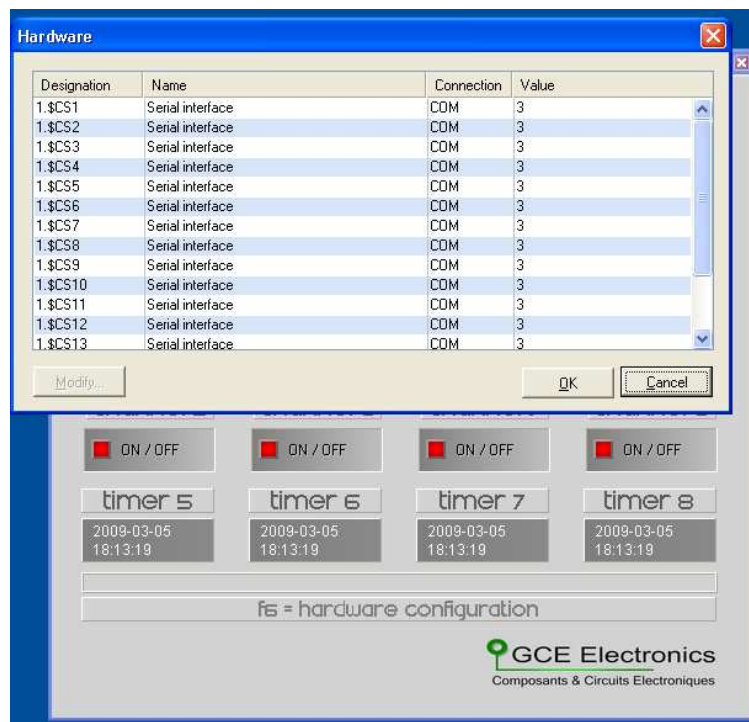
Step 4: Find your USB serial port number :



Step 5: Start the usb control software :

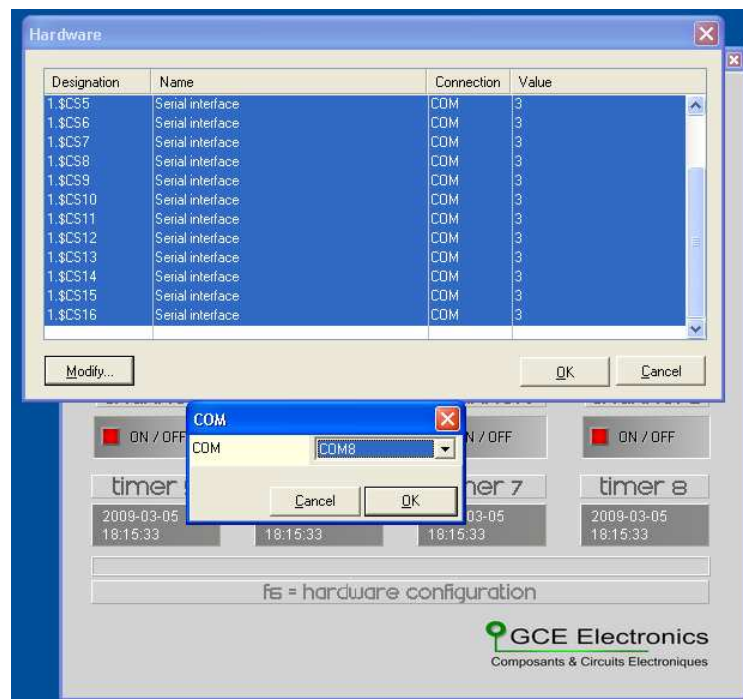


Step 6: Press F6 for hardware configuration

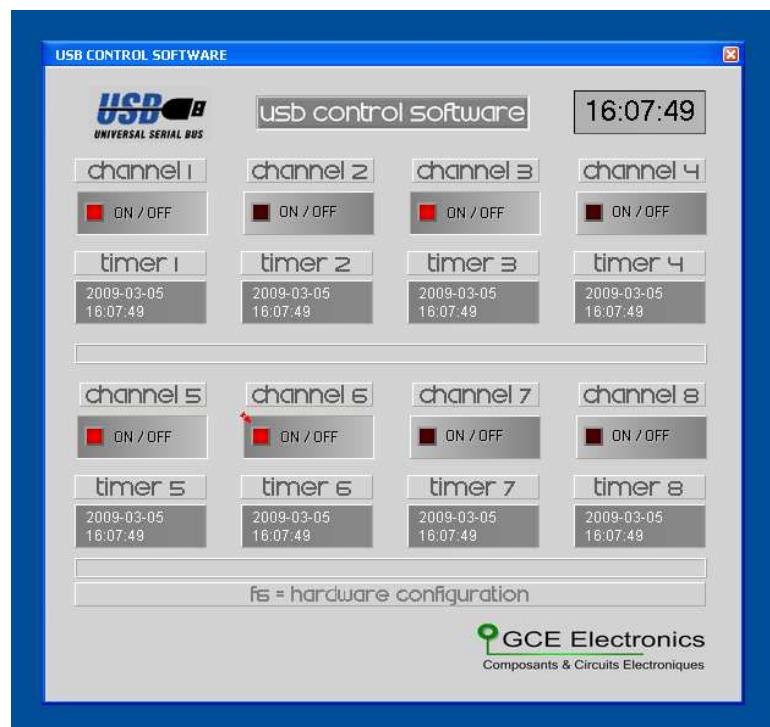


Step 7: Select all port com and click on “modify”

Step 8: Select and valid your port com



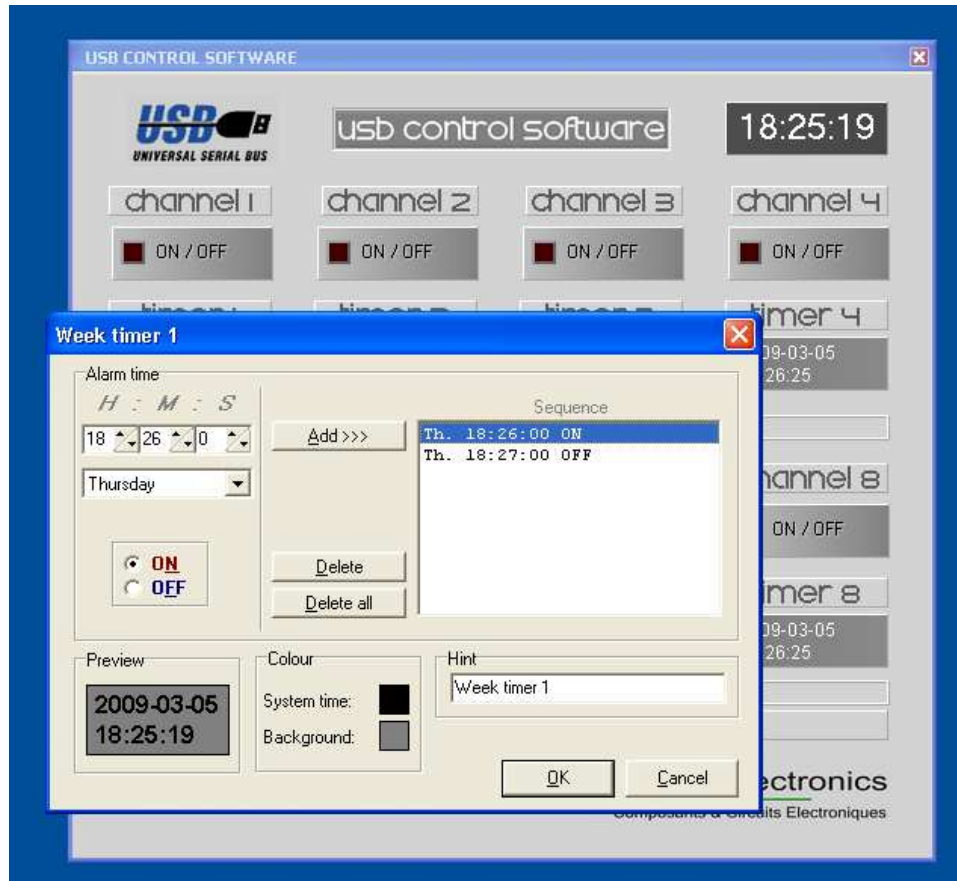
Step 9: The board is ready to use, click on « on/off » buttons to set relays.



Set the timer.

Each channel has a week timer to set relays

Double click on timer time to open the windows timer.



- 1: Set hours, minutes and seconds.
- 2: Set days.
- 3: Set **ON** or **OFF**.
- 4: Click on « Add » to valid the timer preset and add it on window “sequence”
- 5: Program another timer preset.

You can now program a complete sequence with a lot of presets for each channel.

.....

GCE.ELECTRONICS@GMAIL.COM